

الناقد: الربيع الجليج  
الناظم: احمد العلوي  
الاداء: بلخياط

عنوان القصعة: يذرك الانساف صبححة: 1

عود + باهي - 3

12/8

الفرقة 3

ناي

الفرقة 3

I - II

I - II

I - II

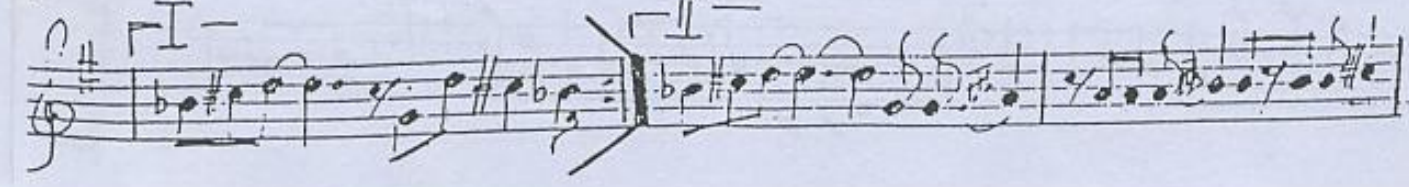
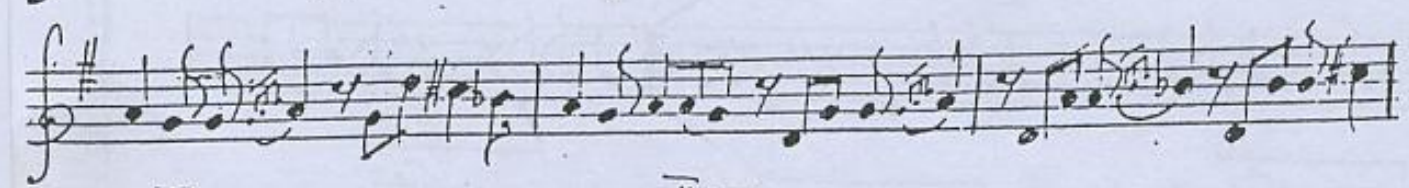
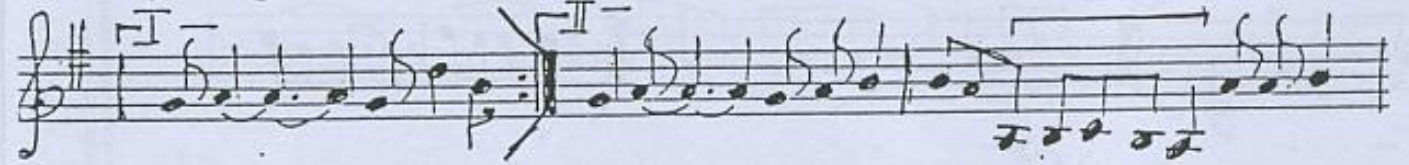
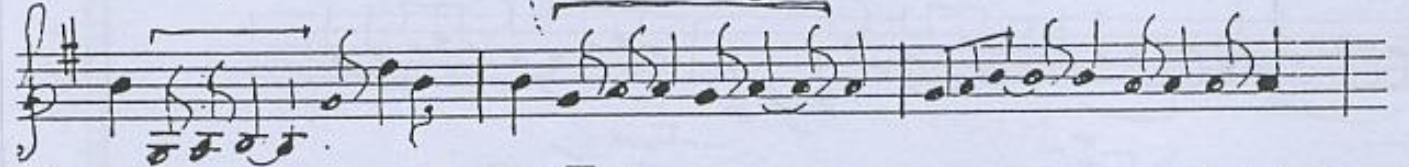
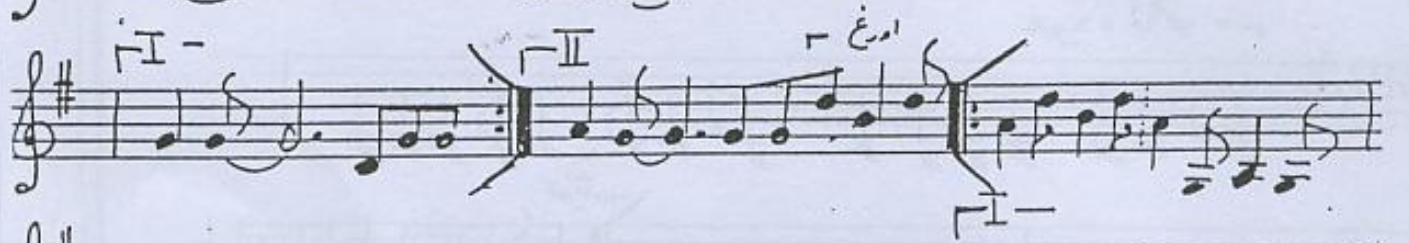
غناء

I - II

I - II

f

الكلمات : .....  
النسخة : .....  
الاداء : .....



3 يا ذا ك الإنسان بيسم الله الرحمن الرحيم

الكلمات :  
الصلحيين  
الأداء :  
عنه

Handwritten musical score for 'Ya Dha' al-Insan' in Arabic. The score consists of 12 staves of music in a single system, written in a style that combines traditional Arabic notation with Western staff notation. The key signature is one sharp (F#) and the time signature is 3/4. The music features a variety of note values, including eighth and sixteenth notes, and rests. There are several fermatas and dynamic markings throughout. The score is divided into sections by the word 'الفرقة' (Al-Furqa) and 'أورغ' (Organ).

الكلمات :  
الصلحون :  
الاداء :

Handwritten musical score for the piece "Ya Dha al-Ilahiyan". The score is written on 12 staves. It begins with a key signature of one flat (Bb) and a 4/4 time signature. The notation includes various rhythmic values such as eighth and sixteenth notes, and rests. There are several repeat signs with first and second endings (I and II) marked above the staves. The word "غناء" (Ghanna) is written above the 10th staff, indicating the vocal line. The score concludes with a key signature change to one sharp (F#) in the final two staves.

يا ذا الالهيان 5 بسم الله الرحمن الرحيم

The image shows a page of handwritten musical notation. At the top, there is a title in Arabic: "يا ذا الالهيان 5 بسم الله الرحمن الرحيم". Below the title, there are ten musical staves. The first three staves contain a melody written in treble clef with a key signature of one sharp (F#) and a 2/4 time signature. The melody is written in Arabic style with various note values and rests. Above the first staff, there is a "II" with a bracket. The fourth staff contains a few notes in a different clef, possibly bass clef, with a key signature of one sharp and a 2/4 time signature. The remaining six staves are empty.